

# Shepherd



## Features

Rooms: 8  
Bedrooms: 4  
Bathrooms: 3.5  
Master Bath: Yes  
Year Built: To Be Built  
Color: Choice  
Style: Victorian  
Type: Detached  
Living Area: 2625 sq. ft.  
Garage: 2 car attached

## Specifications

Appliances:  
Dishwasher, Electric Stove, Recirculating Microwave Hood  
Construction: Wood Frame  
Cooling: Central Air, two zones  
Electric: Circuit Breakers, 200 AMP  
Hot Water: Navien Hot Water on Demand  
Heating: Gas, FHA  
Siding: Vinyl  
Roof: 30 Year Architectural Asphalt Shingles  
Exterior: Professional Landscaping, Porch  
Road Type: Paved Road, Privately Maintained  
Utilities: Town Water, Town Sewer, Municipal Electric, Natural Gas  
Amenities: Open Space, Water Access, Community Garden, Barn  
5 Star ENERGY STAR Certified Home  
HOA Fee: \$162 monthly

*See additional options list to customize your home*

[www.AnthemVillages.com](http://www.AnthemVillages.com) - A Seal Harbor Development Project

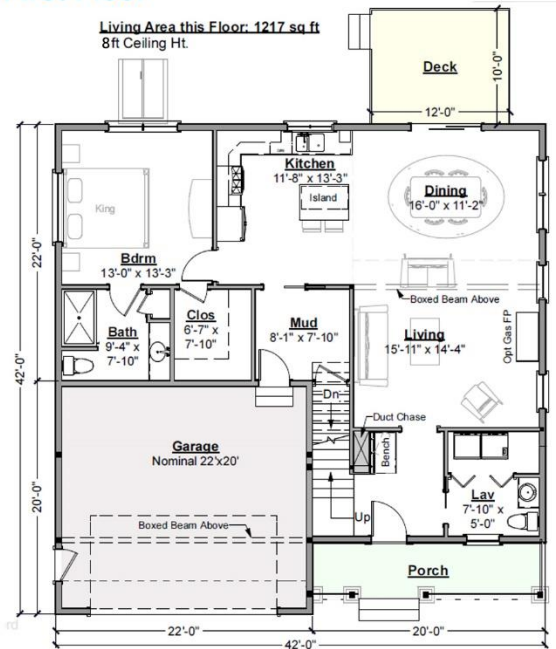
Marketed by Kristin Hilberg, Keller Williams Boston North West - (978) 501-2912



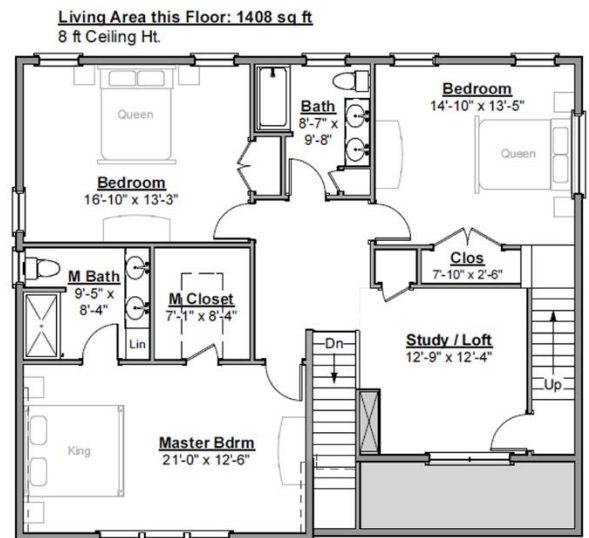
# Shepherd

Plans are for illustrative purposes only. Prices and plans are subject to change without notice.

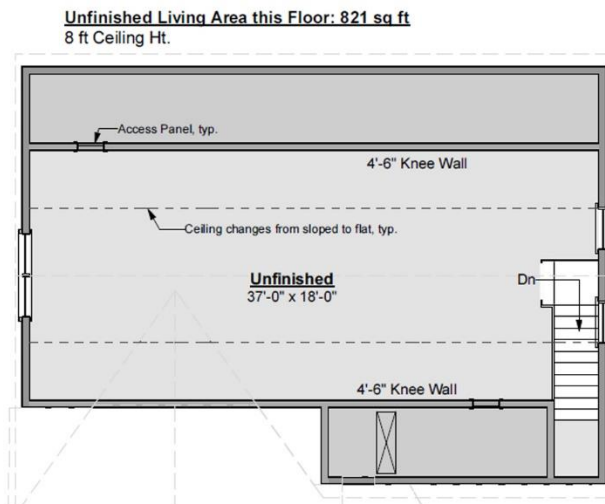
First Floor



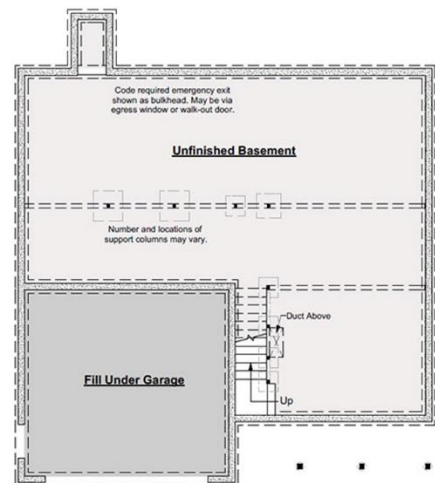
Second Floor



Third Floor



Basement Plan



HOUSE DESIGNS

